

Population vs. Yield

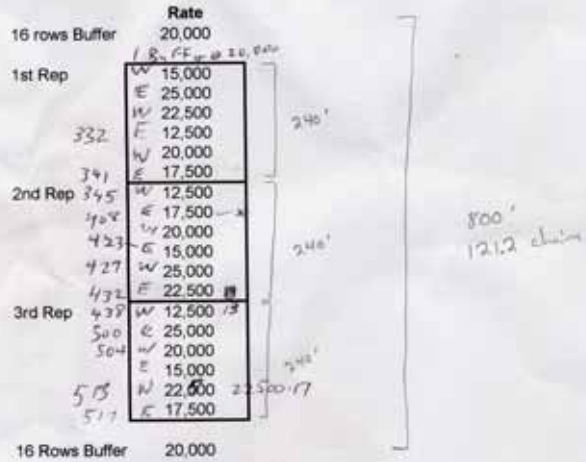
Doug Keesling
Keesling Seed Farms

Methods

- Planted Asgrow RX 742RR Corn.
- Randomly planted 16 Row strips 3 times.
- Rates used: 12500, 15000, 17500, 20000, 22500, and 25000.
- Control population 20,000
- Harvested with John Deere combine with yield monitor.

**Corn Plot 2004
Keesling Seed Farms
Corn seeding Study**

North (Wheat on this side)

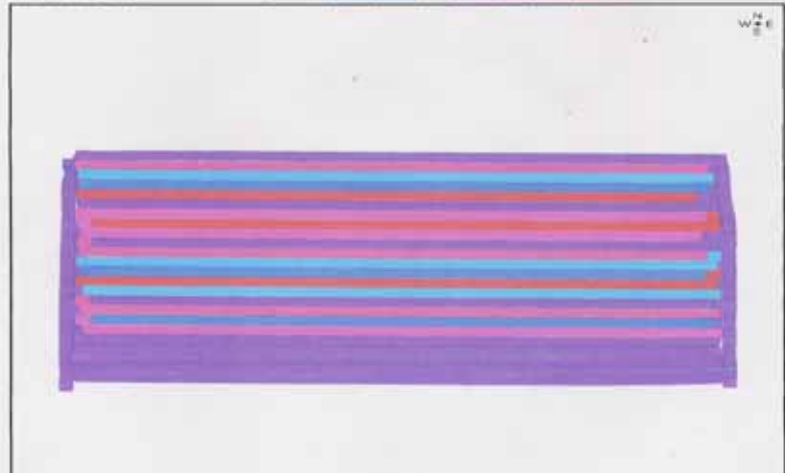


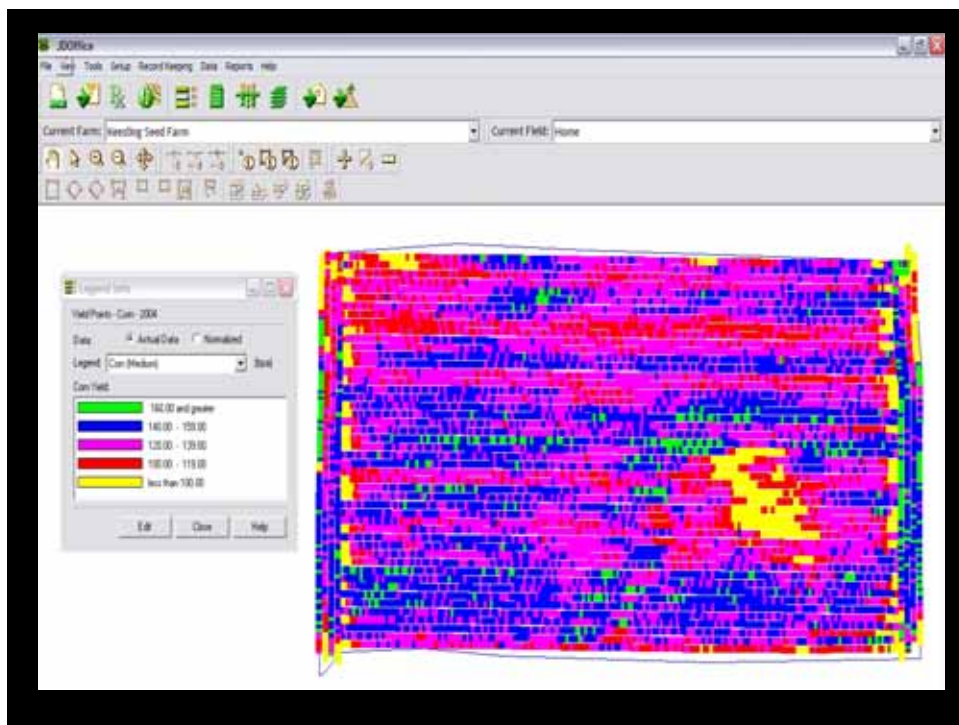
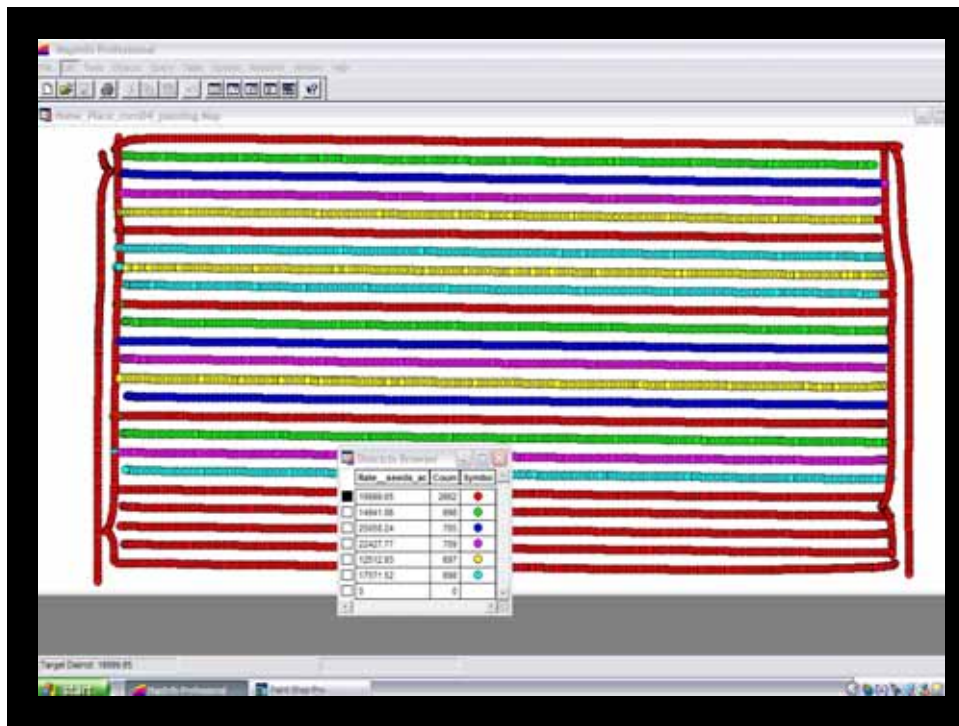
South Side (Wheat on this side also)

Seed Target Map (2004)
Corn planting
 Client: Lee Scheufler
 Farm: Keesling Seed Farm
 Field: Home
 Documented Acres: 43.22
 Documented Hours: 1.71



GREENSTAR





Summary

- Moisture was not a limiting factor in 2004.
- The higher the planting population the greater the yield up to 20,000.
- Need multiple years of data to draw a better conclusion on the correct population rate for dryland in Central Kansas.