

KARA – 2009 – Salina KS

Project Title: Winter Wheat response to Copper and Zinc

Investigator: Doug Palen – Palen Family Farms

Statement of Problem: Based on visual observations and tissues samples I believe that my winter wheat plants may have favorable responses to foliar Copper and Zinc applications in my long-term no-till fields.

Project Objective: Evaluate winter wheat response to foliar Copper and Zinc application.

Methodology:

Run a simple strip trial with and without copper and zinc foliar applied to growing wheat.

Ground application: 12/04/08

Copper EDTA – 24 oz/A

Zinc EDTA – 24 oz/A

Moly-5% - 4.5 oz/A

Water – 7 gal/A

Partly Cloudy

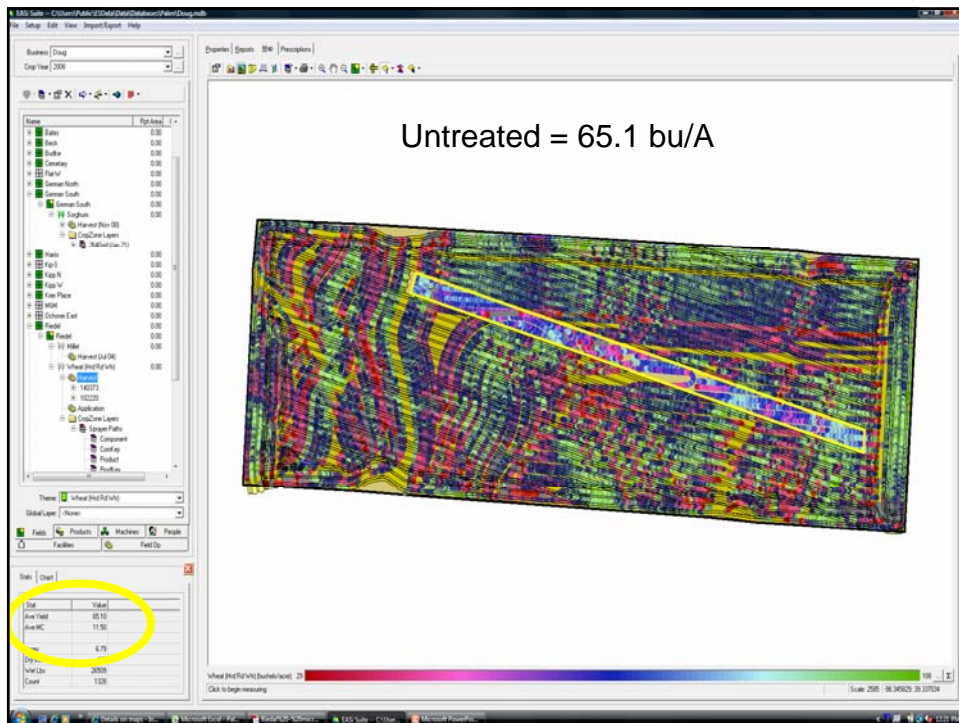
Temp 55

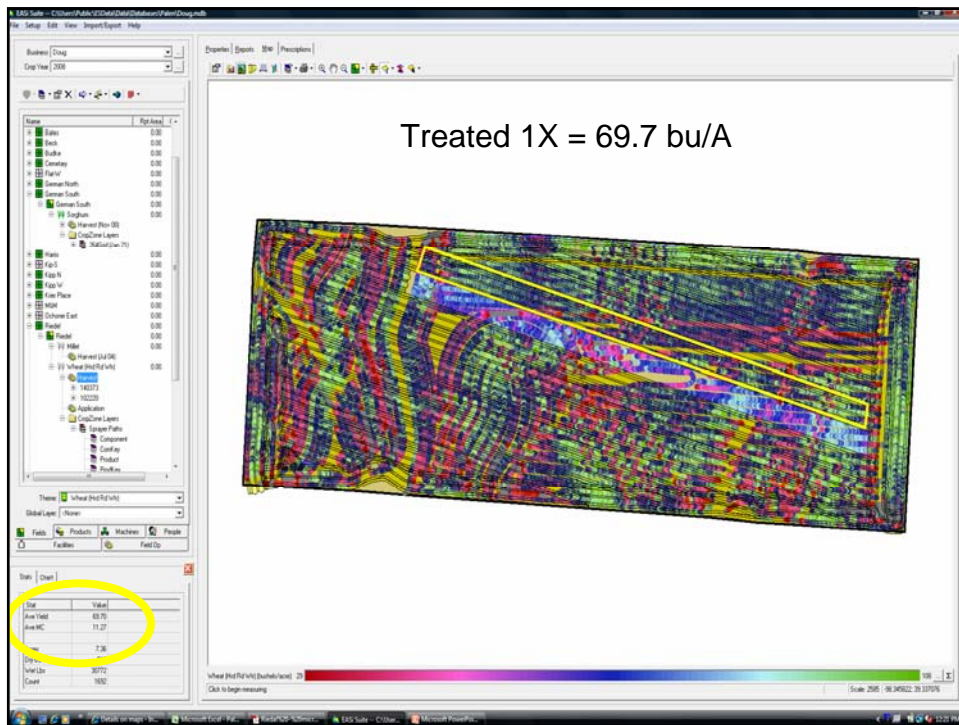
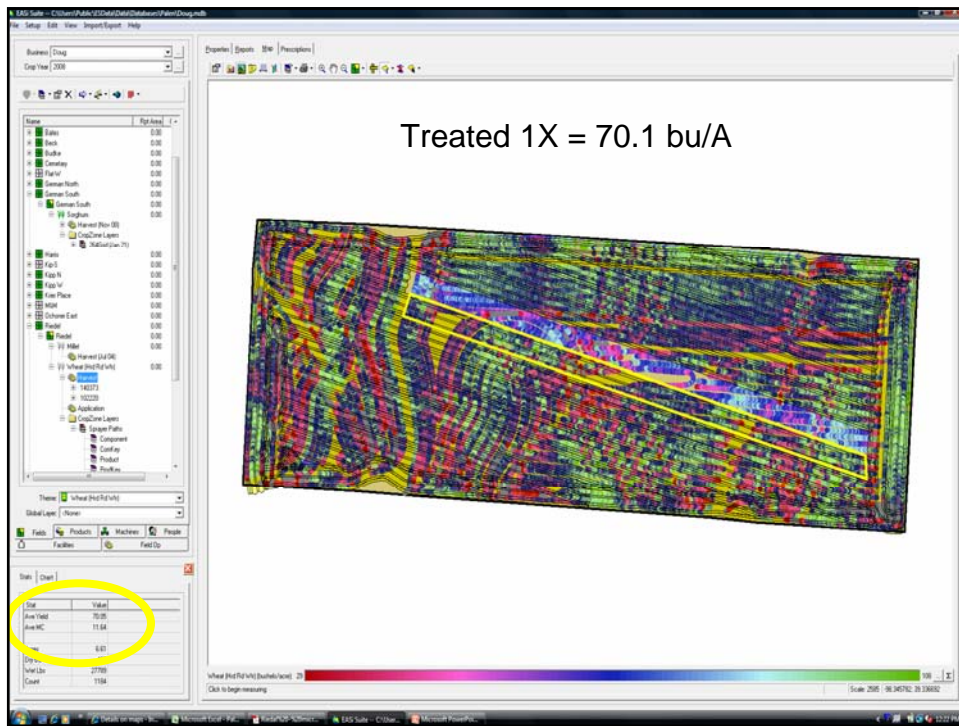
Humidity – 30%

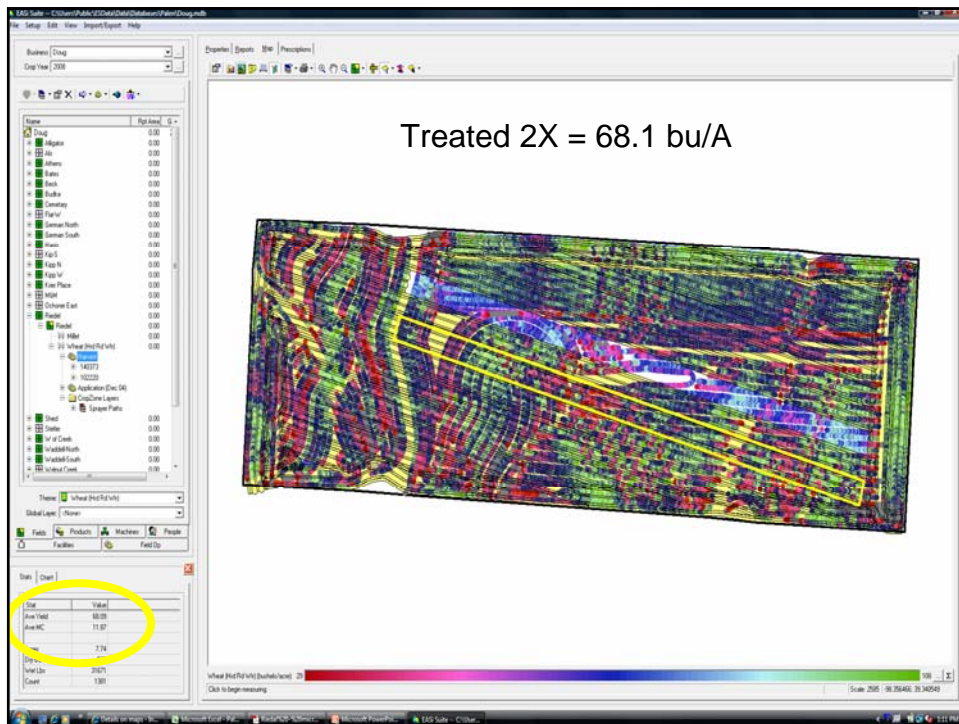
Tips – TeeJet AI – 60psi

- Harvest Info:

- The field was harvested with two combines running GreenStar yield monitors on July 4th, 2008.
- The machines harvested primarily east and west.
- Andy Holzwarth processed my data in MapShots and provided me the following data.







What have I learned – (??)

- Perhaps we can pull out paired T's along the pass to get some more data.
- Certainly need to have some replications of treatments.
- Be careful with micro-nutrient balances.
- Micro's may not be the 'low hanging fruit'.

Many thanks to K.A.R.A.

Questions – Answers

Suggestions?