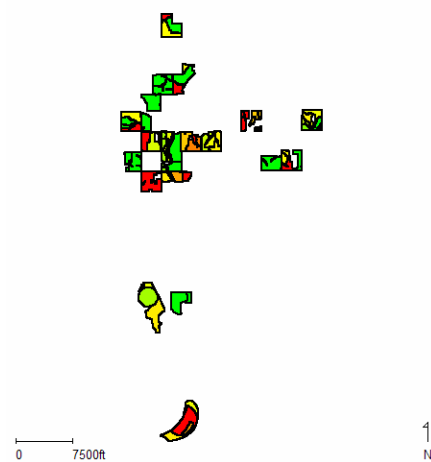


# 2007 KARA Research Project

## Wheat top dressing trial By Lenhart Farms Inc.

### Lenhart Farms Fields

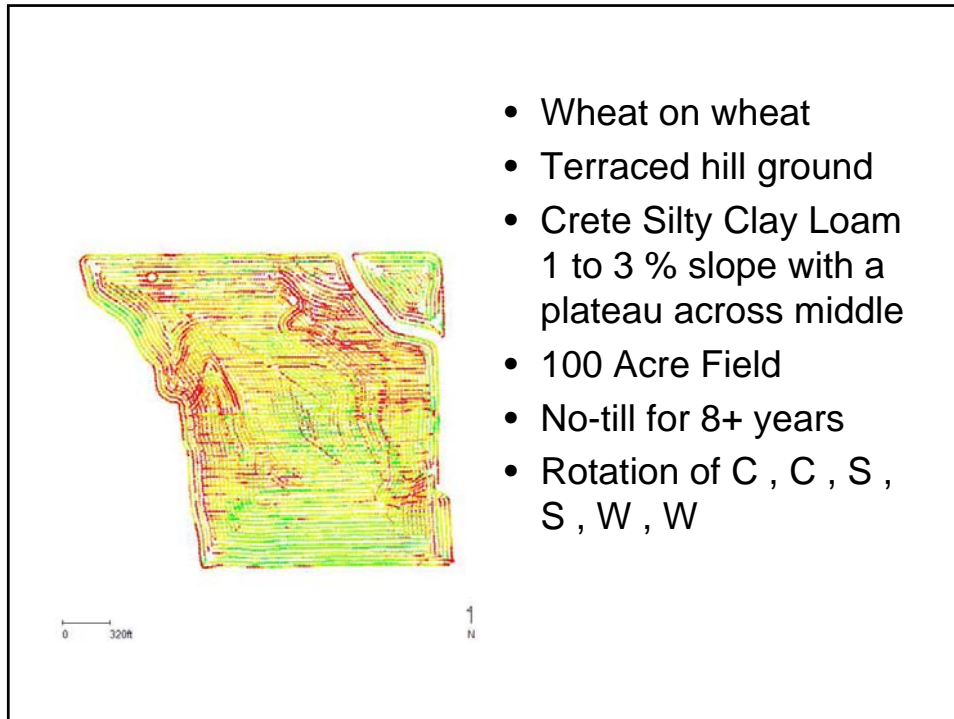


## Reason for applying for Grant

- To see how different fertilizer rates affected yields
- To see how different application methods affect yields
- To see what combination of the rates & application method was the most profitable

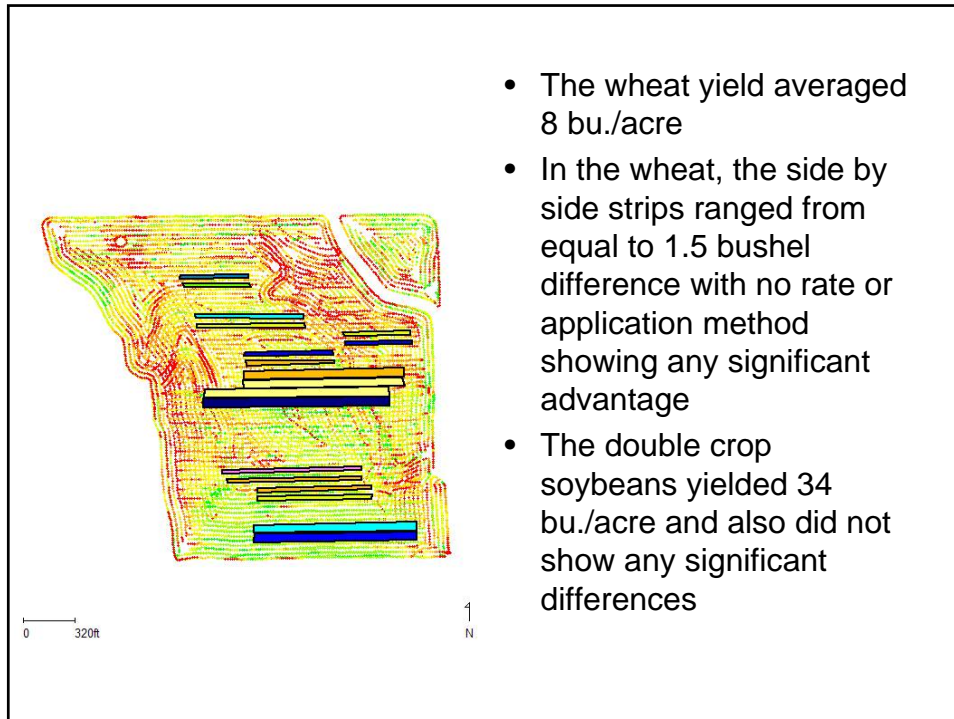
## Methods used to collect data

- Trimble EZ map for fertilizer strips
- Agco Fieldstar 1 to collect yield data
- Ag Leader SMS to query data



- Wheat on wheat
- Terraced hill ground
- Crete Silty Clay Loam  
1 to 3 % slope with a plateau across middle
- 100 Acre Field
- No-till for 8+ years
- Rotation of C , C , S ,  
S , W , W

- Was set up to have 4 fertilizer rates (60#, 75#, 90#, & 120#) using 28%
- 3 application methods of each rate (spray, stream, & coulter inject)
- Randomly replicated 3 times in 90 or 120 ft strips
- The spray & stream strips were done in the last week of March with a wheel boom sprayer using 8004 fanjets or 3 hole streamer caps with orifices
- The coulter injection was a 31 ft blue jet bar rented from Farmway COOP but was only used on 2 swaths because in the moist ground conditions it was pulling out wheat and then it froze before it was dry enough to return so we abandoned the rest of the trial



## Conclusion

- Fertilizer rates & application methods DON'T make a difference when your wheat has a late freeze.
- This year the double crop soybeans were not affected by the top dress fertilizer applied to the wheat

# Questions